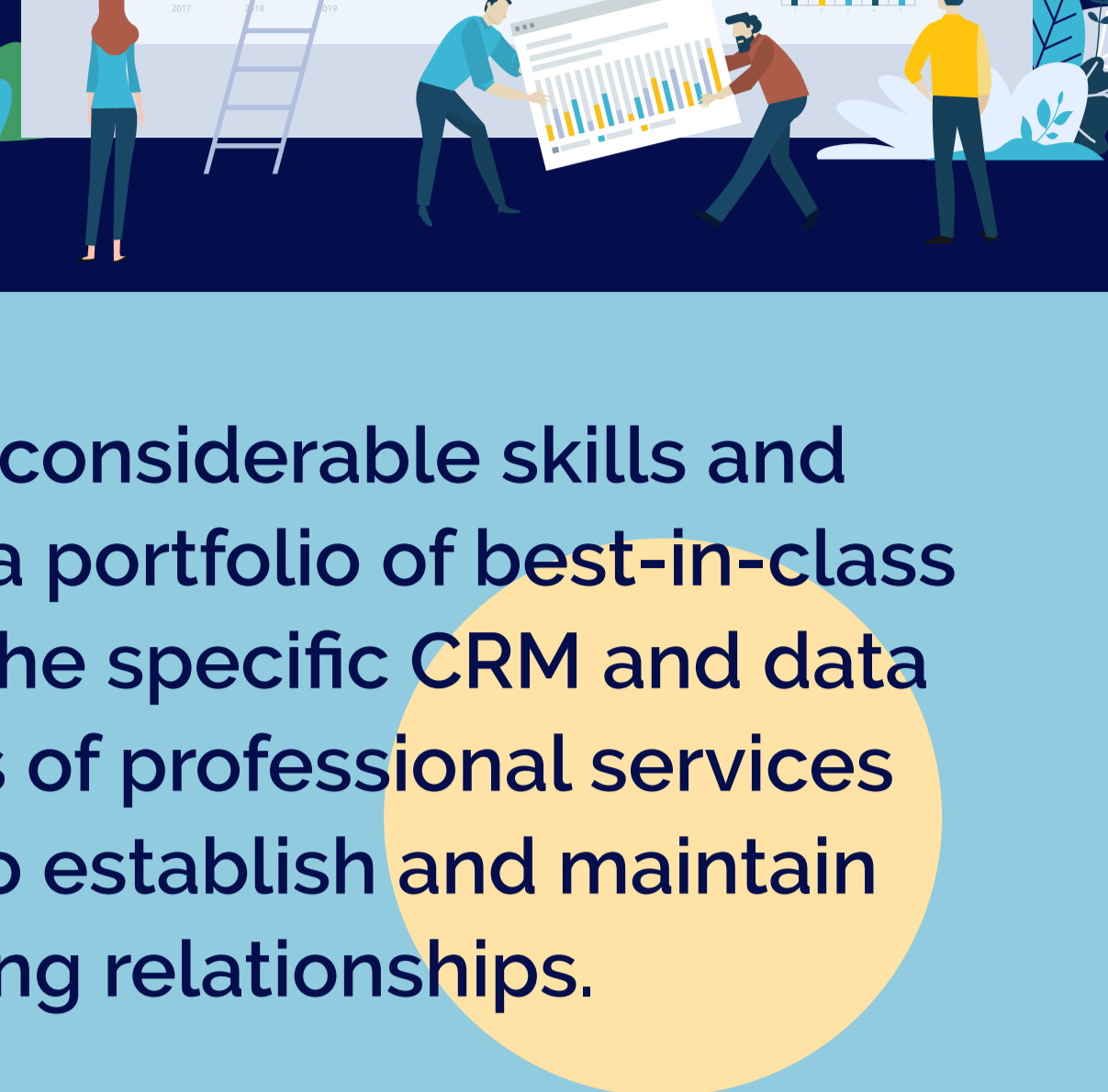




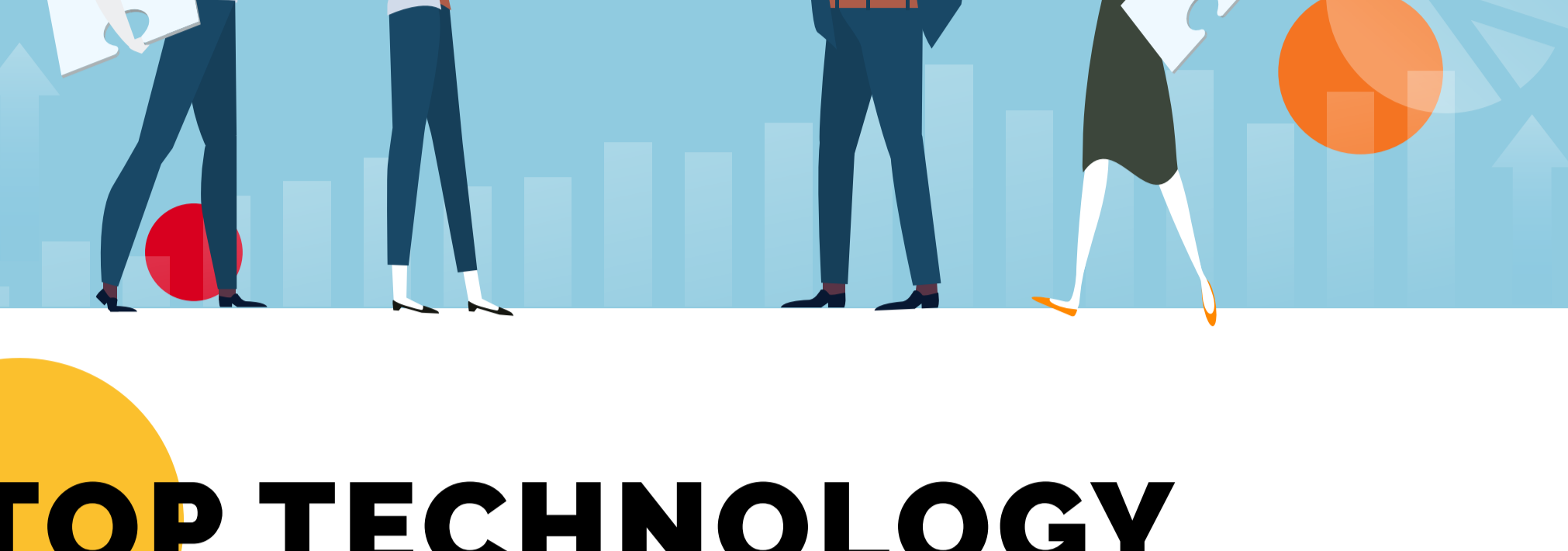
CRM practice

With a focus on **EXCELLENCE**, Wilson Allen helps professional services firms make the best use of **CRM TECHNOLOGY**.

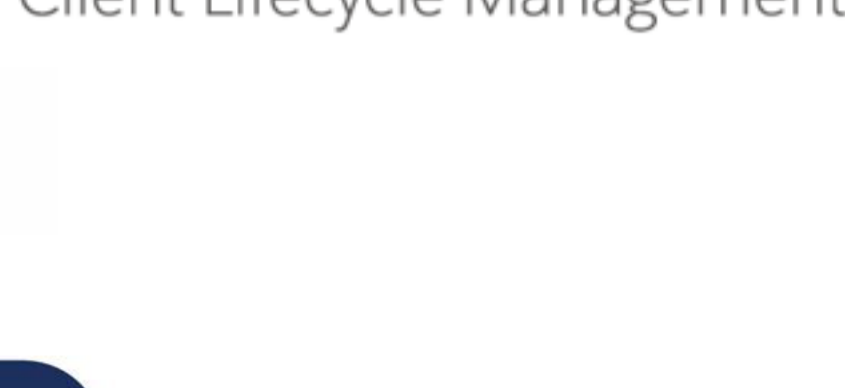
What differentiates our capabilities is a unique mix of strategic consulting and an unrivalled technical team skilled in CRM integrations, report building, training, data management and data quality services.



We've applied our considerable skills and experience to create a portfolio of best-in-class solutions that meet the specific CRM and data management needs of professional services firms, enabling us to establish and maintain long-standing relationships.



TOP TECHNOLOGY



System Experience

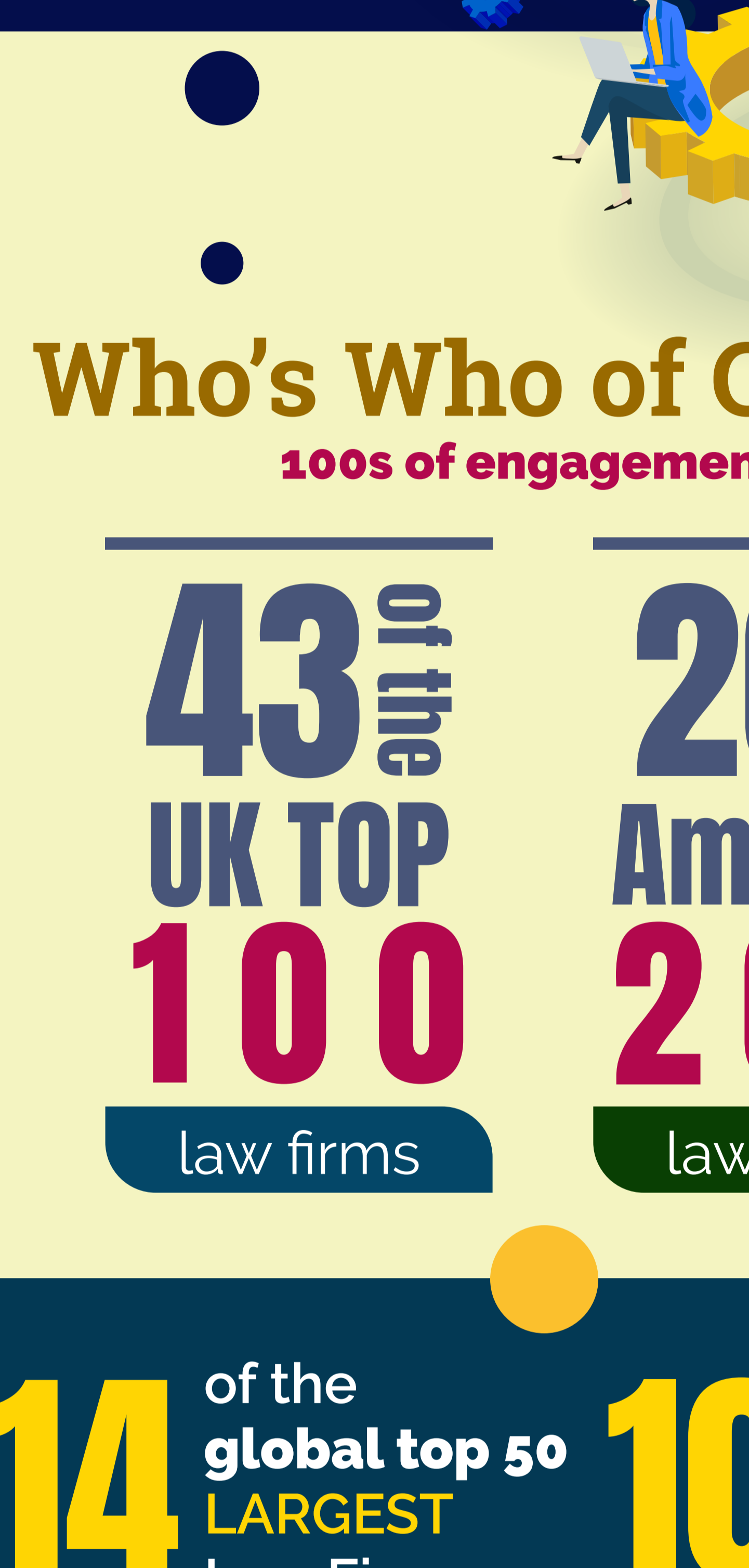
LexisNexis Interaction

Intapp OnePlace

BDP/Dynamics/Contact Manager

Salesforce

Others



Who's Who of Clients

100s of engagements

43rd of the UK TOP 100 law firms

20th of the Am Law 200 law firms

14 of the global top 50 LARGEST Law Firms

10 of the biggest CANADIAN Law firms

6 of the leading offshore firms

5 of the leading Australian firms

4 of the leading Irish/European firms



International Appeal



Our clients are truly international, from firms with around 100 professionals up to some of the largest firms in the world!



Team Dynamics



Our consultants travel the world far and wide

To learn more about Wilson Allen's CRM Expertise, please visit wilsonallen.com/crm-solutions

